



# Hard Chess Puzzle # 0086

By

G Bud Games  
<https://gbud.in>

December 5, 2021

## Contents

<b>Hard Chess puzzle # 0086 - Mate in 3 moves</b>	<b>4</b>
Hard chess puzzle 0086 . . . . .	4
Solution to hard chess puzzle 0086 . . . . .	5
Solution 1 . . . . .	5
Right moves for the solution to the hard chess puzzle 0086	8
Explanation for the moves . . . . .	8
Categories of hard chess puzzle 0086 . . . . .	9
hard chess puzzle 0086 chart . . . . .	9
How to view the solution to hard chess puzzle 0086 . . . . .	11
How to get help for moves in the hard chess puzzle 0086 . . . . .	12
Play chess for free . . . . .	13

## List of Figures

1	Solve this hard chess puzzle 0086. Mate in 3 moves @ <a href="https://gbud.in/gw876j3">https://gbud.in/gw876j3</a> . . . . .	4
2	Solve this hard chess puzzle online with solution @ <a href="https://gbud.in/gw876j3">https://gbud.in/gw876j3</a> . . . . .	4
3	Initial board position of hard chess puzzle 0086 . . . . .	5
4	Rh8+ - Your rook moves to h8 and gives check. This is a deflection move since this attracts or forces the opponent's king to h8. . . . .	6
5	Kxh8 - Opponent's king captures your rook as this is the only legal move available. This is a zugzwang move since the king is forced to respond. King can not come to seventh rank due to the presense of your king. . . . .	6
6	Ra8+ - Your rook moves to a8 and it is giving check to opponent's king. . . . .	7
7	Rf8 - Opponent's rook blocks the check . . . . .	7
8	Rxf8# - Your rook captures opponents rook and and check-mate. Opponent's king can't move since no free squares are available.. This is how you can mate in 3 moves. . . . .	8
9	hard chess puzzle 86 chart 1 . . . . .	9
10	hard chess puzzle 86 chart 2 . . . . .	10
11	hard chess puzzle 86 chart 3 . . . . .	10
12	hard chess puzzle 86 chart 4 . . . . .	11
13	Click the solution button to view solutions @ <a href="https://gbud.in/gw876j3">https://gbud.in/gw876j3</a> . . . . .	11

14	Click the help button to get help on next move @ <a href="https://gbud.in/gw876j3">https://gbud.in/gw876j3</a> . . . . .	12
15	Solve more hard puzzles @ <a href="https://gbud.in/chshdpz">https://gbud.in/chshdpz</a> . . . . .	12
16	Solve other puzzles @ <a href="https://gbud.in/chsgppz">https://gbud.in/chsgppz</a> . . . . .	12
17	Play chess online for free. Solve puzzles and play with friends	13
18	Solve this puzzle online by scanning this QR code or go to the link below . . . . .	14

## Hard Chess puzzle # 0086 - Mate in 3 moves

Solve this hard chess puzzle and improve your chess games through improvement of your chess strategies and chess tactics. This hard puzzle is a subset of [kids games](#).

Puzzle No : 0086

Difficulty level : hard

Description : Mate in 3 moves

Next Move : White

Player level : Advanced

Short URL for puzzle : <https://gbud.in/gw876j3>

### Hard chess puzzle 0086

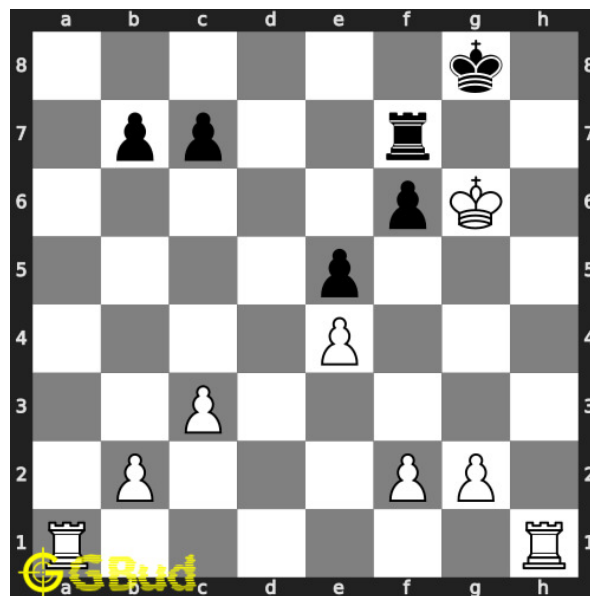


Figure 1: Solve this hard chess puzzle 0086. Mate in 3 moves @ <https://gbud.in/gw876j3>



Figure 2: Solve this hard chess puzzle online with solution @ <https://gbud.in/gw876j3>

Dont forget to check out [chess puzzles](#), [easy chess puzzles](#), [medium chess puzzles](#), [hard chess puzzles](#) and [chess puzzles collections](#) .

## Solution to hard chess puzzle 0086

At this puzzle, next [move](#) is by [White](#). The objective of the puzzle is to mate in 3 moves.

See the interactive solution at the [puzzle page](#)

### Solution 1

**Initial board position** This is the initial board position of hard chess puzzle 0086.

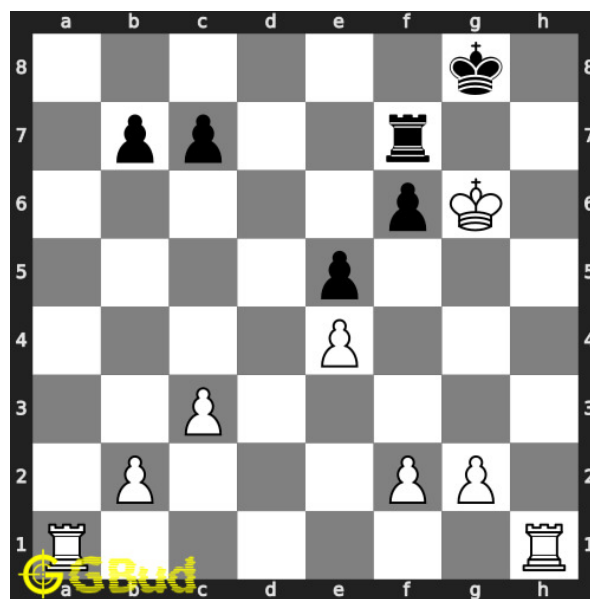


Figure 3: Initial board position of hard chess puzzle 0086

**Move 1** Move by white

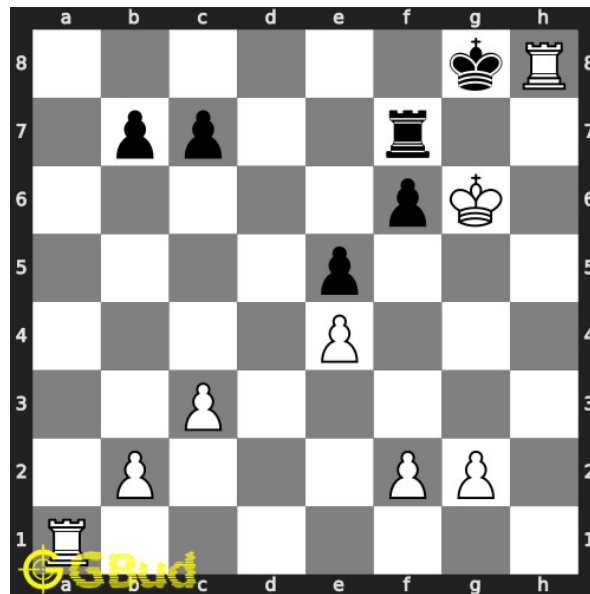


Figure 4: Rh8+ - Your rook moves to h8 and gives check. This is a deflection move since this attracts or forces the opponent's king to h8.

**Move 2** Move by black

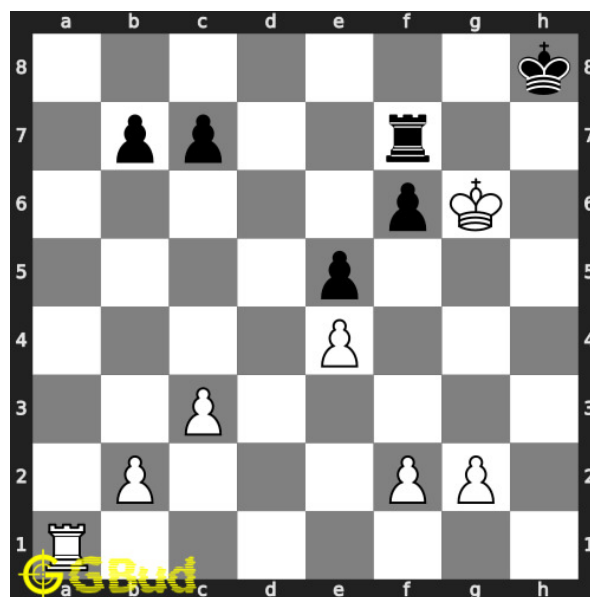


Figure 5: Kxh8 - Opponent's king captures your rook as this is the only legal move available. This is a zugzwang move since the king is forced to respond. King can not come to seventh rank due to the presence of your king.

**Move 3** Move by white

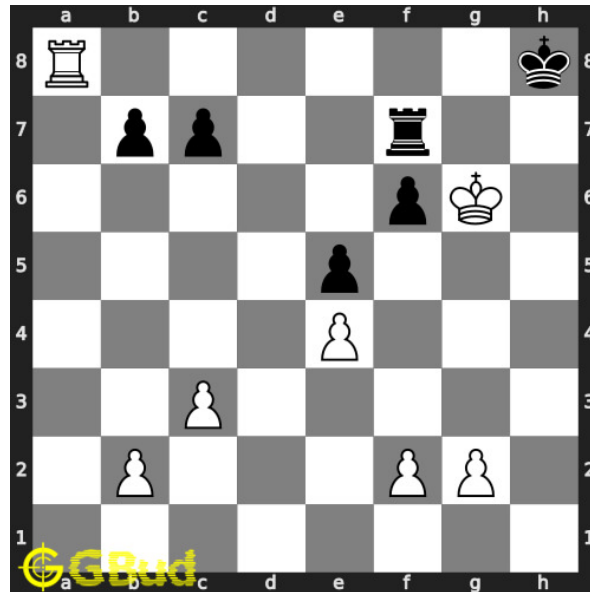


Figure 6: Ra8+ - Your rook moves to a8 and it is giving check to opponent's king.

**Move 4** Move by black

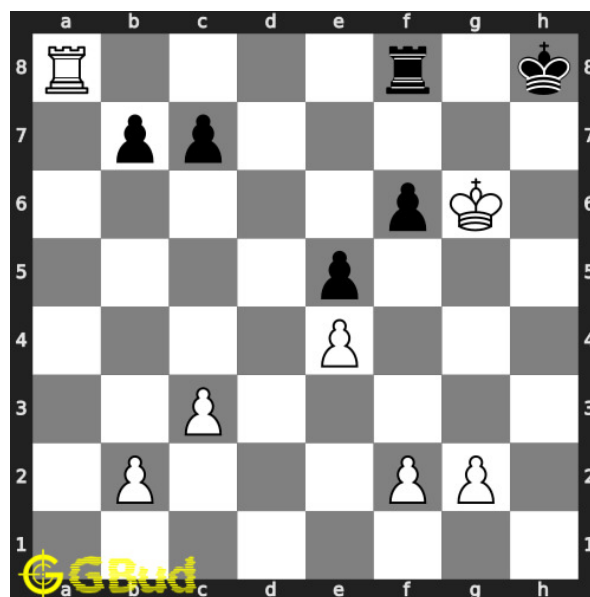


Figure 7: Rf8 - Opponent's rook blocks the check

**Move 5** Move by white

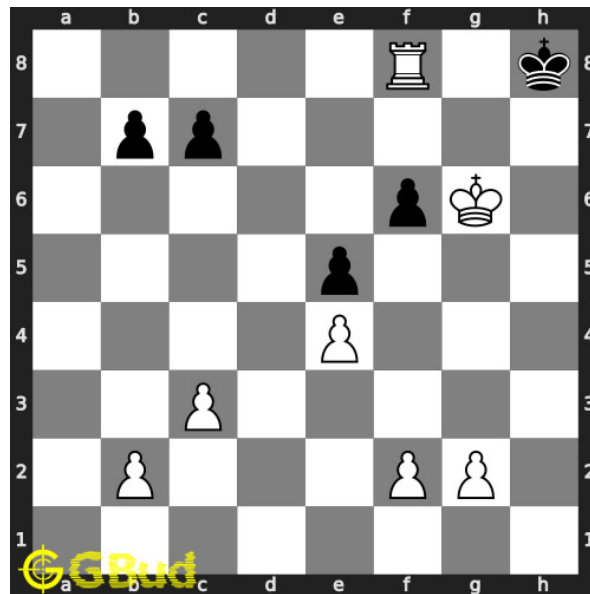


Figure 8: Rxf8# - Your rook captures opponents rook and and checkmate. Opponent's king can't move since no free squares are available.. This is how you can mate in 3 moves.

### Right moves for the solution to the hard chess puzzle 0086

Based on the objective of the puzzle, you have to make the right moves. Following are the right moves

1. Rh8+, Ra8+, Rxf8#

### Explanation for the moves

1. Rh8+ - Your rook moves to h8 and gives check. This is a deflection move since this attracts or forces the opponent's king to h8.
2. Kxh8 - Opponent's king captures your rook as this is the only legal move available. This is a zugzwang move since the king is forced to respond. King can not come to seventh rank due to the presense of your king.
3. Ra8+ - Your rook moves to a8 and it is giving check to opponent's king.
4. Rf8 - Opponent's rook blocks the check
5. Rxf8# - Your rook captures opponents rook and and checkmate. Opponent's king can't move since no free squares are available.. This is how you can mate in 3 moves.
6. For right move - You have won by sacrificing your rook. Good move



7. For wrong move - You could have sacrificed the rook for the mate in 3 moves. Try again

## Categories of hard chess puzzle 0086

This hard chess puzzle falls in these categories.

1. [Hard chess puzzles](#)
2. [Sacrifice puzzles in chess](#)
3. [Mate in 3 puzzles in chess](#)
4. [Endgame puzzles in chess](#)
5. [Strategy puzzles in chess](#)
6. [Zugzwang puzzles in chess](#)
7. [Rook puzzles in chess](#)

### hard chess puzzle 0086 chart



Figure 9: hard chess puzzle 86 chart 1



Figure 10: hard chess puzzle 86 chart 2

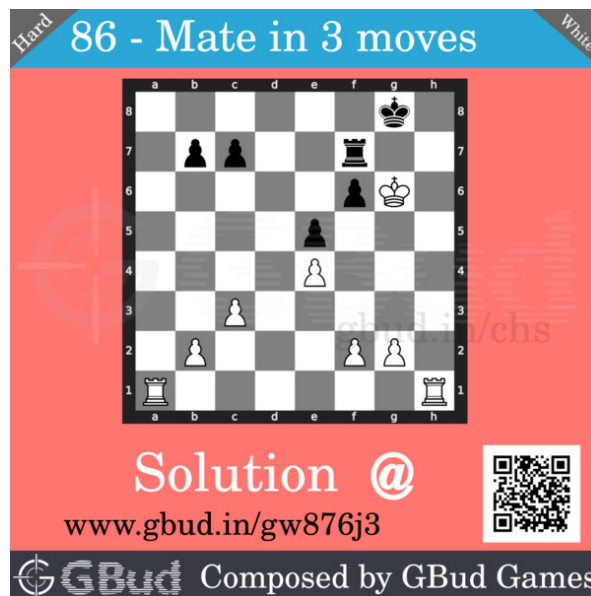


Figure 11: hard chess puzzle 86 chart 3

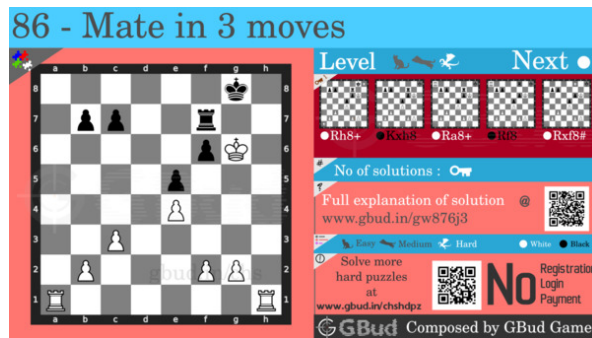


Figure 12: hard chess puzzle 86 chart 4

## How to view the solution to hard chess puzzle 0086

To view the [solution to this puzzle](#), follow the steps given below

1. Go to the [puzzle page](#)
2. Click the solution button (Key as shown [below](#)) to view the solution



Figure 13: Click the solution button to view solutions @ <https://gbud.in/gw876j3>

## How to get help for moves in the hard chess puzzle 0086

To get help or the possible next moves in the puzzle, , follow the steps given below

1. Go to the [puzzle page](#)
2. Click the help button (exclamation mark as shown [below](#)) to get help or suggestion on next possible [move](#)



Figure 14: Click the help button to get help on next move @ <https://gbud.in/gw876j3>



Figure 15: Solve more hard puzzles @ <https://gbud.in/chshdpz>



Figure 16: Solve other puzzles @ <https://gbud.in/chsgppz>

## Play chess for free

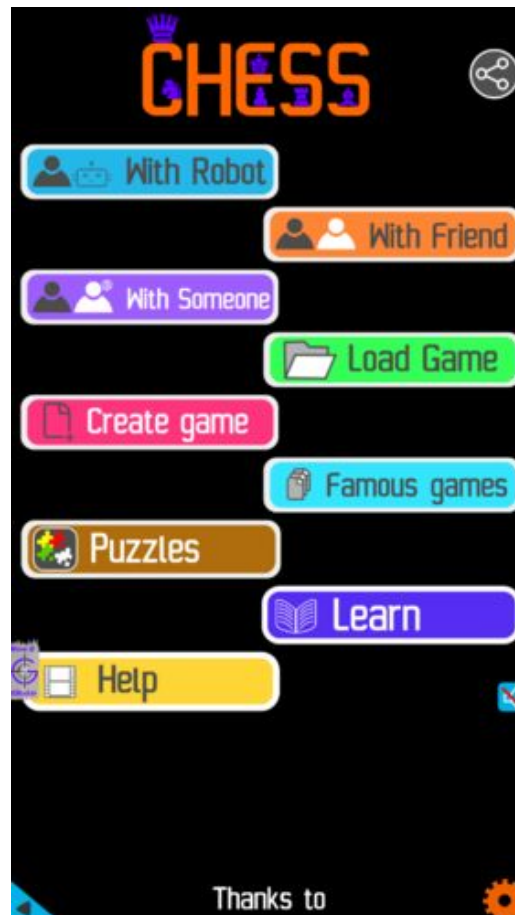


Figure 17: Play chess online for free. Solve puzzles and play with friends

Play chess for free at <https://gbud.in/chs>

We present you a platform to play chess online with friends for free. No need to install any app. You can play chess for free without registration or login.

Simple. You can do several chess related activities.

1. [solve chess puzzles](#)
2. [learn about chess](#)
3. [play chess with computer](#)
4. [play chess with friend](#)
5. [create your own chess games](#)

6. [fen viewer](#)
7. [fen editor](#)
8. [fen generator](#)
9. [pgn viewer](#)
10. [chess board editor](#)
11. [view famous chess games.](#)



Figure 18: Solve this puzzle online by scanning this QR code or go to the link below

<https://gbud.in/gw876j3>

Read the latest article on Hard Chess puzzle # 0086 - Mate in 3 moves by scanning this QR code or click the link

Previous article : « [Hard Chess puzzle # 0085 - Mate in 3 moves](#)

Next article : [Hard chess puzzles](#) »

[Back to top](#)

[Contact Us](#)